


Collection of bollards for commercial and institutional application, the KUBE is an object of urban design that can be integrated into any context and is particularly suitable for paths, parks and landscape areas. Exceptional European build quality with high corrosion resistant finish. Robust marine grade die-cast aluminum construction, with stainless steel fasteners and factory sealed glass diffuser.

**Luminaire characteristics:**

**Power input:** 13W  
**Lumens:** 264lm to 390 lm (for 3000K, 90CRI)  
**Luminaire efficacy:** Up to 30lm/W

<b>Source:</b>	LED module (LM-80 tested) 2700K: 90CRI, 3000K: 90CRI, 4000K: 90CRI.
<b>Lumen maintenance:</b>	80% of initial lumens at 70 000 hours (L80)(LM-79)
<b>Optics:</b>	Accent light
<b>Material:</b>	Body: Die-cast and extruded aluminum Diffuser: Toughened glass Hardware: Stainless steel screws and silicone gaskets
<b>Mounting:</b>	Install with flange accessory or fasten to ground
<b>Electrical:</b>	High efficiency electronic LED driver, rated 50 000 hours, 120V-277V
<b>Dimming:</b>	0-10V (120-277V), down to 15%.
<b>Finish:</b>	White or aluminum gray painted finish, following a double powder paint in 3 step process: surface treatment containing ceramic nano particles (Bonderite).Epoxy primer paint.Polyester powder paint with high resistance against UV rays and harsh weather conditions.
<b>Weight:</b>	S6300 3.52lb 1.62 kg S6306 6.21lb 2.82 kg S6307 12.94lb 5.87 kg
<b>Warranty:</b>	5 year limited warranty
<b>Ratings:</b>	IP54, IK06
<b>Certification:</b>	 cULus listed for wet location

**ORDERING INFO**

\_\_\_\_\_  
FIXTURE

**MODELS**

**S6300** - Micro kube 120

**S6306** - Micro kube 450

**S6307** - Micro kube 900

**LED**

**H** - 2700K, 90CRI

**W** - 3000K, 90CRI

**N** - 4000K, 90CRI

**VOLTAGE**

**120** - 120V

**UNV** - 120V

**FINISH**

**01** - White<sup>(1)</sup>

**14** - Aluminum gray

**DIMMING**

**D10** - 0-10V

<sup>(1)</sup> Available for kube 120 (**S6300**) model

**ACCESSORIES**

(TO BE ORDERED SEPARATELY)

**S6309** - Black Stake (For S6300 only)  
H: 7½" (190mm)  
(The upper 3½"(90mm) must stay out of the ground)

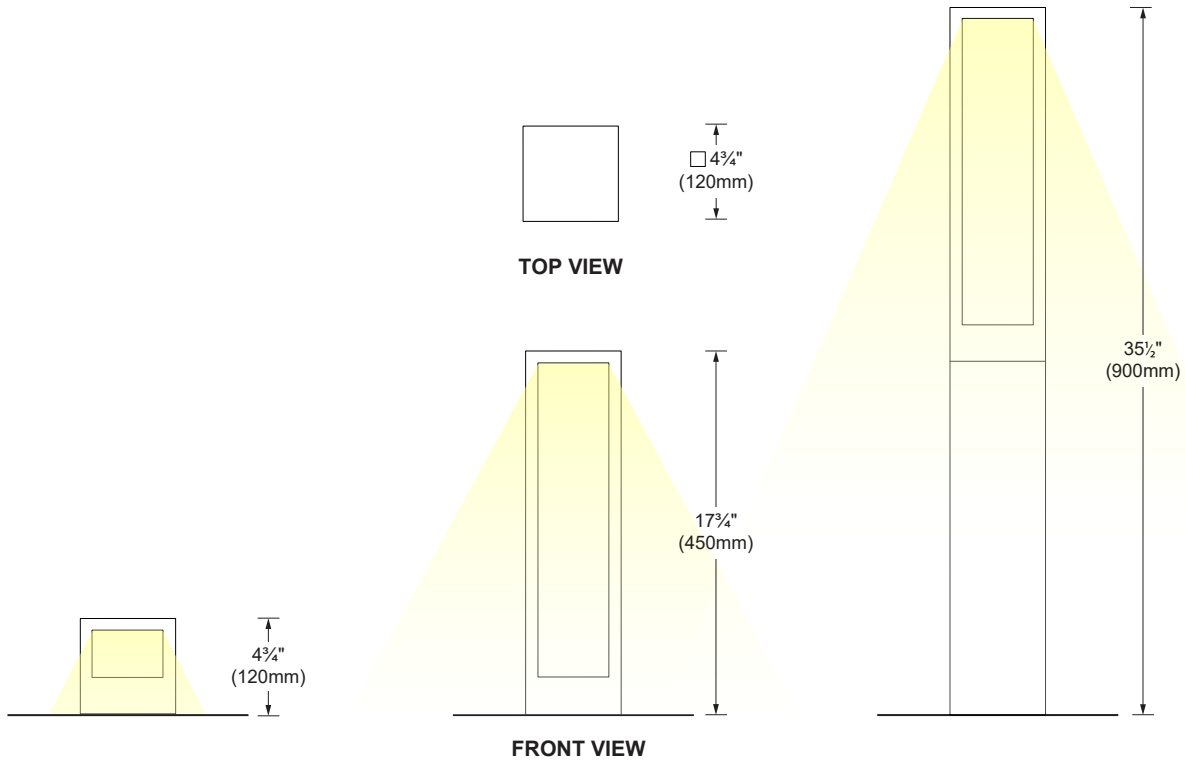


**S6309** - Flange with stainless steel screws  
Ø 4¾" x H: 6½"  
(Ø 118mm x H: 165mm)  
(To be installed in concrete)



**DIMENSIONS**

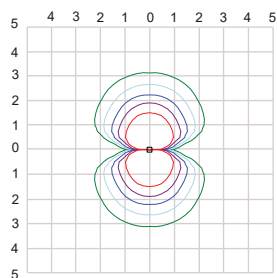
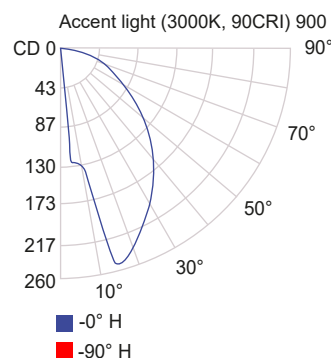
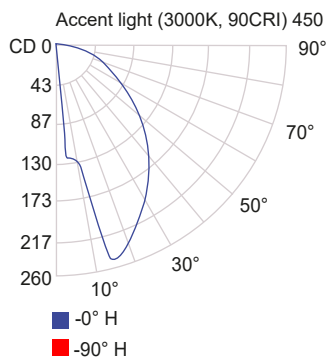
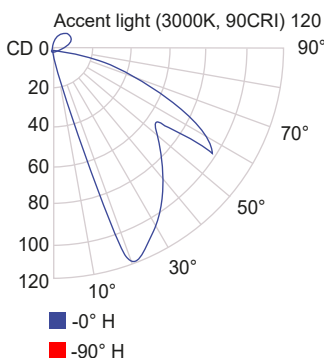
<b>S6300</b> Micro kube 120 bollard	<b>S6306</b> Micro kube 450 bollard	<b>S6307</b> Micro kube 900 bollard
--	--	--



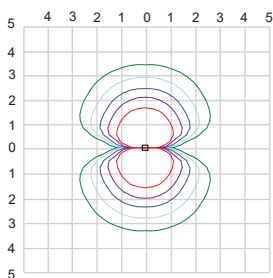
**PHOTOMETRIC DATA**

Visit [sistimalux.com](http://sistimalux.com) for complete photometric data.

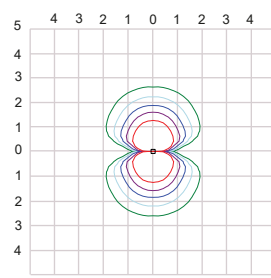
CCT (K)	CRI	LOAD (W)	OPTIC	LUMENS (lm)	EFFICACY (lm / W)	MAX CANDELA (cd)	MODELS
3000K	90	13W	Accent light	264	20	119	S6300W - 120 mm
				390	30	257	S6306W - 450 mm
				390	30	257	S6307W - 900 mm



■ 5 fc ■ 0.5 fc Mounting Height: 0.5ft  
■ 2 fc ■ 0.25 fc Grid scale 1 : 0.5ft  
■ 1 fc



■ 5 fc ■ 0.5 fc Mounting Height: 2ft  
■ 2 fc ■ 0.25 fc Grid scale 1 : 2ft  
■ 1 fc



■ 5 fc ■ 0.5 fc Mounting Height: 3ft  
■ 2 fc ■ 0.25 fc Grid scale 1 : 3ft  
■ 1 fc

CCT options	2700K	3000K	4000K
CRI options	90CRI	90CRI	90CRI
<b>Multiplier</b>	<b>0.94</b>	<b>1</b>	<b>1.07</b>