

**IMPORTANT** - READ CAREFULLY BEFORE INSTALLING FIXTURE. RETAIN THESE INSTRUCTIONS FOR FUTURE REFERENCE.

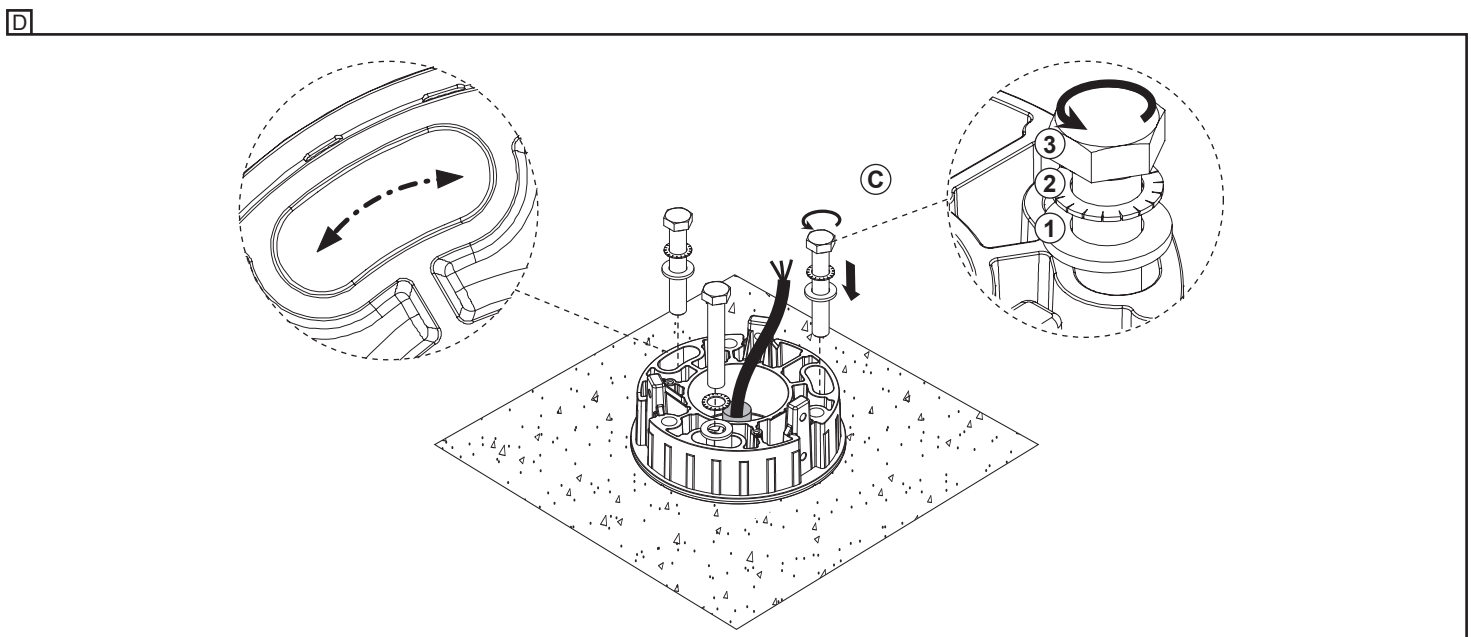
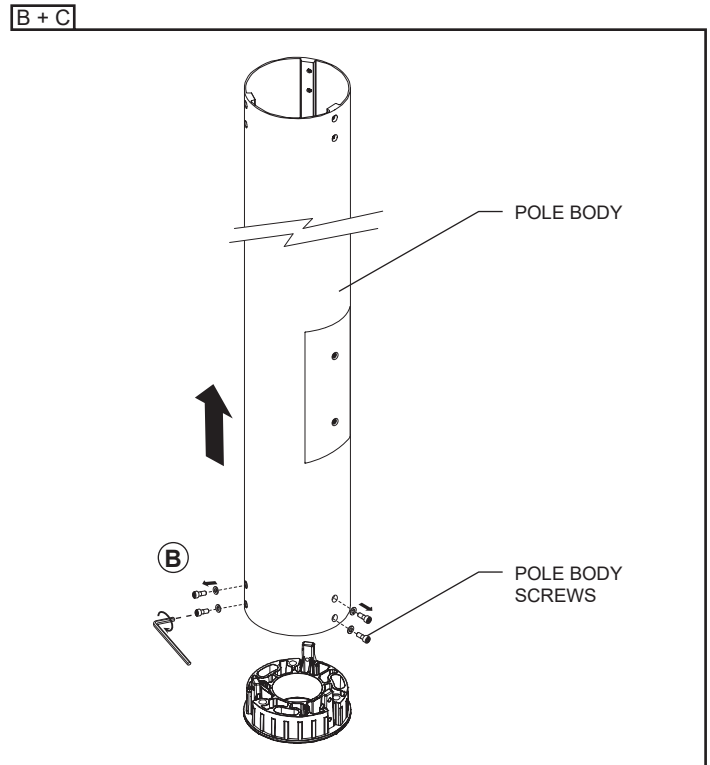
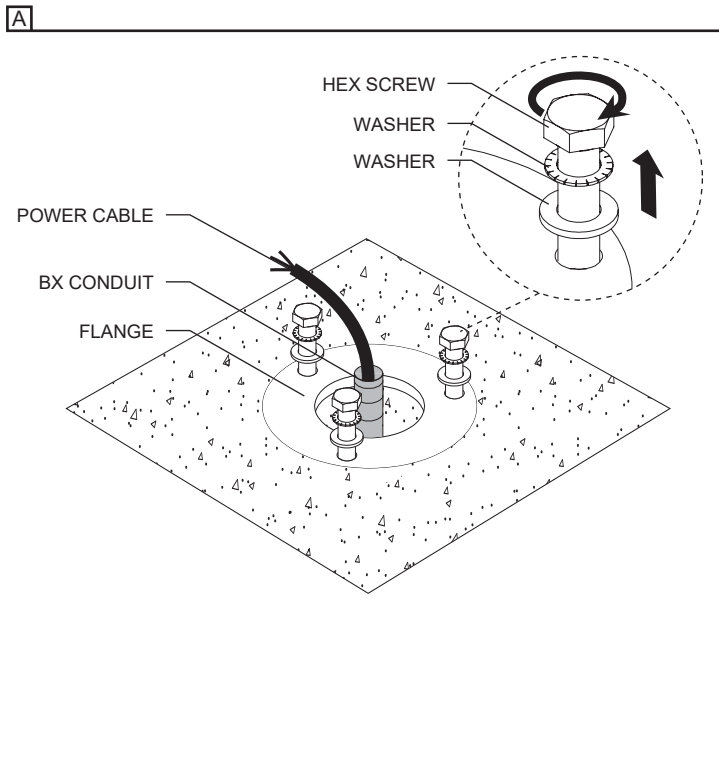
THIS PRODUCT MUST BE INSTALLED IN ACCORDANCE WITH THE NATIONAL ELECTRICAL CODE AND ALL APPLICABLE LOCAL CODES, BY A PERSON FAMILIAR WITH THE CONSTRUCTION AND OPERATION OF THE PRODUCT, AND THE HAZARDS INVOLVED. PROPER GROUNDING IS REQUIRED FOR SAFETY.

## GROUND INSTALLATION IN CONCRETE WITH FLANGE S.4129 INTEGRAL DRIVER (120-277V)

A- UNFASTEN THE (3) HEX SCREWS ON THE FLANGE.

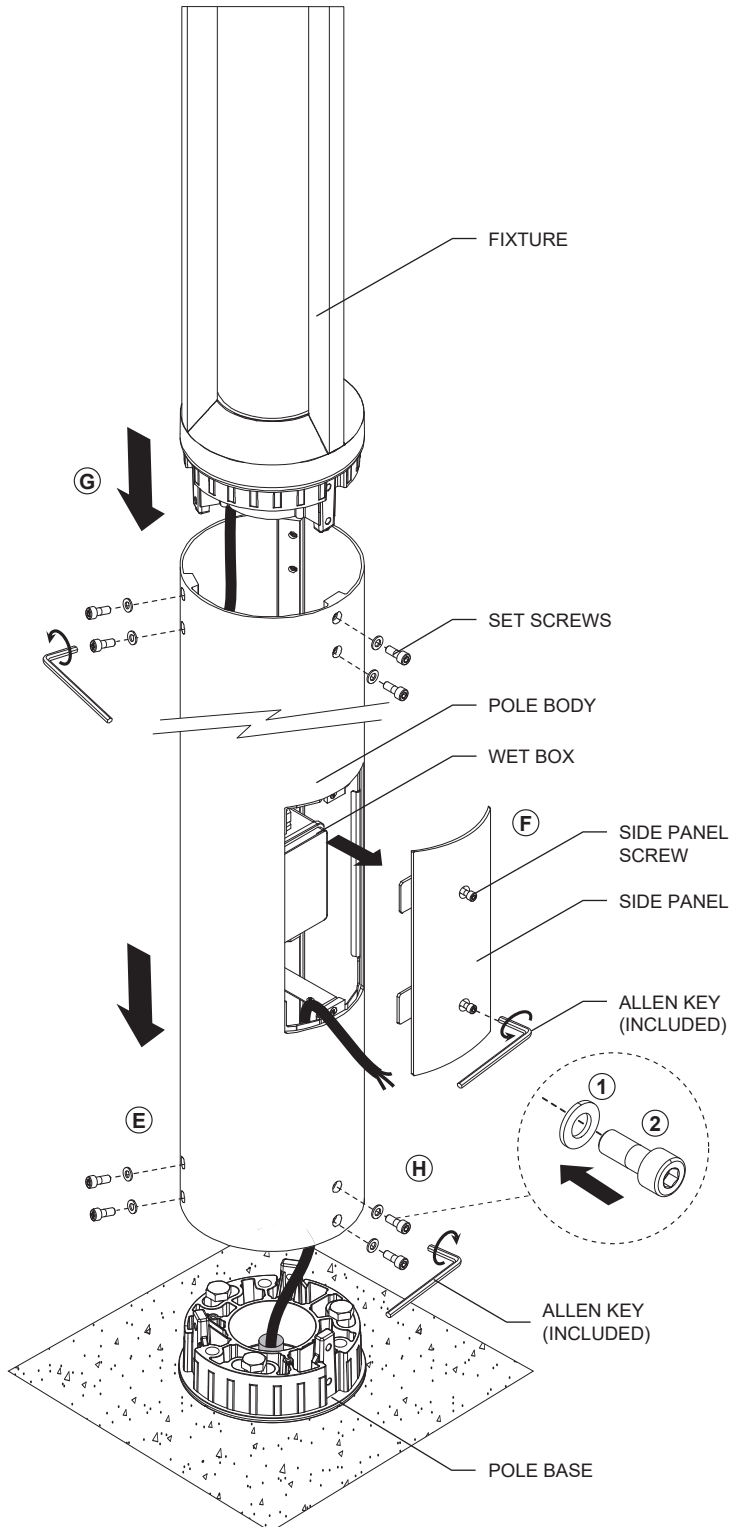
B- UNFASTEN THE (4) POLE BODY SCREWS, USING THE ALLEN KEY (**INLCUDED**) AND REMOVE THE POLE BASE.

C- SECURE THE POLE BASE WITH WASHERS AND HEX SCREWS.



- E- LOWER THE POLE ONTO IT'S BASE AND SECURE IT WITH THE (4) POLE BODY SCREWS, USING THE ALLEN KEY (**INCLUDED**).  
 F- UNFASTEN THE (2) SIDE PANEL SCREWS, USING THE ALLEN KEY (**INCLUDED**) AND REMOVE THE SIDE PANEL .  
 G- PASS THE CABLE THROUGH THE POLE BODY.  
 H- SECURE THE FIXTURE TO THE POLE WITH WASHERS AND SET SCREWS USING THE ALLEN KEY (**INCLUDED**).  
 I- MAKE ALL NECESSARY CONNECTIONS, USING WATERTIGHT TWIST CONNECTORS (**NOT INCLUDED**).

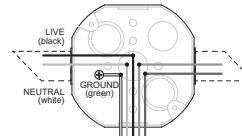
E + F + G



I

WIRING DIAGRAM

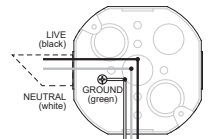
DIMMING 120-277V  
0-10V (D10)



FIXTURE CABLES

WIRING DIAGRAM

NO DIMMING

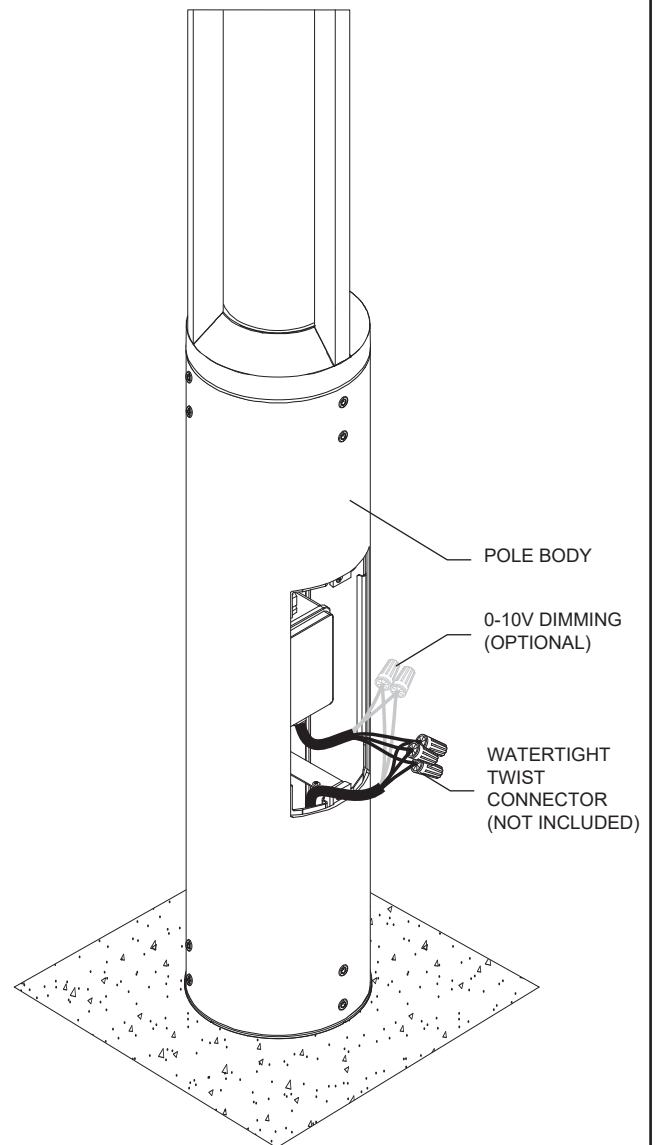


FIXTURE CABLES



If the wires for 0-10v dimming are not used, protect wire ends with twist connectors.

LIVE / DIM +	BLACK
NEUTRAL / DIM -	WHITE
GROUND	GREEN



J- CONNECT THE LED CONNECTOR (**INCLUDED**)

K- CLOSE THE SIDE PANEL.

